



Trio® TC51 pictured above

## Trio® Series Cone Crushers

The Trio® TC series cone crusher delivers a proven approach to processing primary, crushed ores and quarry rock products from 250mm to -8mm. These crushers are designed to be reliable, simple to operate and maintain, while incurring low operational costs. Trio® TC cone crushers feature a design which is universally accepted as the global standard for heavy duty, reliable secondary and tertiary crushing.

Designed to deliver high crushing force, increased horsepower and moderate increases in crushing speed, Trio® TC cone crushers also include modern hydraulic features that allow you to safely and easily adjust the crusher settings.

Tramp material is dealt with safely through a fully automated tramp-release and setting recovery system. The tramp release hydraulics can also be used to safely clear the crushing chamber should a sudden disruption in plant power cause a shut-down of the cone crusher.

In addition, the Trio® TC series cone crusher can be operated remotely using a PC and can be fully integrated into the plant's control system if required.

The Trio® TC cone crusher range is manufactured using a combination of heat-treated, stress-relieved cast and fabricated high strength alloy steels. This combination delivers long service life while retaining the ability to perform weld repairs and rebuilds of major components after operating for several years within severe duty crushing applications.

### Applications

- Secondary, tertiary or quaternary stage crushing circuits
- Down-sizing of various types of ore products, prior to grinding operation
- Pebble
- Glass
- Coral
- Silica sand slag
- Basalt
- Granite
- Limestone quarry materials

### Features

- Rotating bowl assembly
- Hydraulic setting adjustment via ring gear
- Hydraulic tramp release
- Hydraulic clearing
- Hydraulic thread locking during crushing
- Low energy consumption
- Low wear rates
- Manufactured using high strength alloys
- Equipped with numerous safety features to ensure extended operating time through safe operation
- Fully supported by the Weir Minerals global service network

# Trio® TC51 Series Cone Crusher

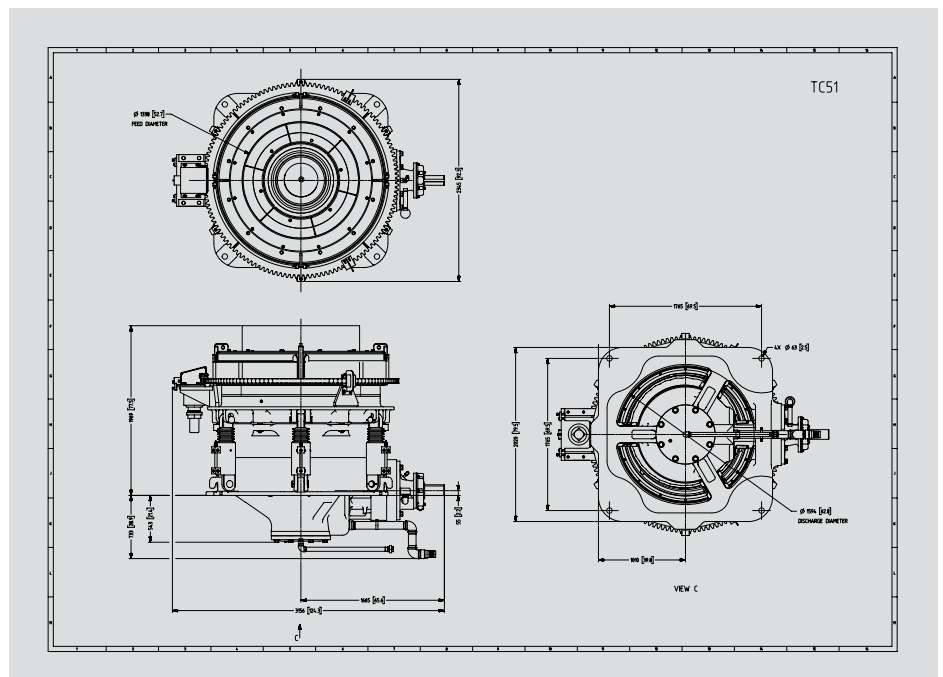
## Trio® TC51 Series Cone Crusher

Crusher head diameter	1295mm (51")
Weight	22,500kg (49,604lbs)
Eccentric throw	70mm (2.75")
Pinion shaft speed	635 rpm
Eccentric bushing material specifications	Casting bronze
Material (method of manufacture and material specification)	Casting Carbon Steel

	Standard coarse chamber	Standard medium chamber	Standard fine chamber	Short head coarse chamber	Short head medium chamber	Short head fine chamber
Closed side setting range CSS	19mm-50mm (0.74"-1.96")	16mm-38mm (0.62"-1.49")	13mm-30mm (0.51"-1.18")	10mm-20mm (0.39"-0.78")	6mm*-16mm (0.23"-0.62")	3mm*-16mm (0.11"-0.62")
Maximum feed opening on open side at indicated CSS	284mm (11.18")	245mm (9.64")	265mm (10.43")	116mm (4.56")	100mm (3.93")	75mm (2.95")
Maximum feed opening on closed side at indicated CSS	251mm (2")	221mm (8.70")	135mm (5.31")	105mm (4.13")	90mm (3.54")	60mm (2.36")

\*Operating with a CSS of this size should be reserved for special applications only, please consult a Weir Minerals representative for more information.

## TC51 Series Cone Crusher General Arrangement Drawing



Weir Minerals

trio@mail.weir  
global.weir

Please note: Drawings not to scale. For more information, please contact your local Weir Minerals representative.

Copyright © 2019, Trio Engineered Products, Inc. The trademarks mentioned in this document are trademarks and/or registered trademarks of companies forming part of The Weir Group PLC. WMD0975/201912